

ROBERT LAGA  
*Chairman*

NICHOLAS FANNIN  
*Vice Chairman*

ROSE TROMBETTA  
*Secretary*

**TOWN OF CARMEL**  
**ENVIRONMENTAL CONSERVATION BOARD**



60 McAlpin Avenue  
Mahopac, New York 10541  
Tel. (845) 628-1500 - Ext. 190  
www.ci.carmel.ny.us

**BOARD MEMBERS**

Edward Barnett  
Vincent Turano  
John Starace

**ENVIRONMENTAL CONSERVATION BOARD AGENDA**

**SEPTEMBER 6, 2018 – 7:30 P.M.**

**EXTENSION OF WETLAND PERMIT**

<b><u>APPLICANT</u></b>	<b><u>ADDRESS</u></b>	<b><u>TAX MAP #</u></b>	<b><u>COMMENTS</u></b>
1. MK Realty	Route 6 & Old Route 6	55.6-1-44&45	Site Plan

**ELIGIBLE FOR A PERMIT**

2. NYCDEP	Kirk Lake Dam - Off of Hill Street	64.19-1-17	Geotechnical Borings (2)
-----------	---------------------------------------	------------	--------------------------

**SUBMISSION OF AN APPLICATION OR LETTER OF PERMISSION**

3. Pickman, Gladys	86 West Lake Blvd	75.7-3-16	Replace/Repair Boathouse Roof
4. Sabatini & Scarfone	799 East Lake Blvd	75.43-1-17	Addition to Existing Porch

**MISCELLANEOUS**

5. Minutes – 8/16/18

# NEW YORK STATE DEPARTMENT OF ENVIRONMENTAL CONSERVATION

Division of Environmental Permits, Region 3  
21 South Putt Corners Road, New Paltz, NY 12561-1620  
P: (845) 256-3054 | F: (845) 255-4659  
www.dec.ny.gov

August 10, 2018

New York City Dept. of Environmental Protection  
96-05 Horace Harding Expy  
Corona, NY 11368  
Attn: Paul Costa

Re: **DEC No. 3-3720-00217/00003**  
**Kirk Lake Dam (NYS ID No. 213-0481, Hazard Class B)**  
**Kirk Lake (Waters Index No. H-31-P 44-14-7-P 52, Class B)**  
**Trib. To Muscoot River (Waters Index No. H-31-P 44-14-7, Class A)**  
**Town of Carmel, Putnam County**

## NOTICE OF NO JURISDICTION

Dear Mr. Costa:

The Department of Environmental Conservation (DEC) has reviewed a letter dated June 18, 2018 requesting information on DEC jurisdiction concerning a proposed geotechnical investigation of Kirk Lake Dam where two borings will be completed to categorize the foundational rock masses and define foundation material parameters. The plan document reviewed is titled, "Controlled Lakes – Lake Kirk Project Plan", dated July 30, 1996 with revision date unknown, and attached to this notice (1 sheet).

The proposed work is considered "Ordinary Maintenance" as defined in Article 15 Protection of Waters Part 608.1(v). Therefore, no Dam Safety Permit is required for these activities pursuant to Part 608.3.

The proposed work is also not within the "banks" or "bed" of Kirk Lake or Tributary to Muscoot River as defined in Part 608.1 (a) & (b) respectively. Therefore, a Protection of Waters Stream Disturbance permit pursuant to Part 608.2 is not required. Thus, no Article 15 Protection of Waters Permit is required for the proposed work.

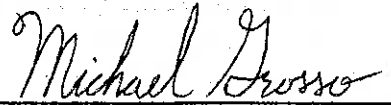
Please be aware while a permit is not required, you are still responsible for ensuring that work shall not pollute any stream or waterbody. Care should be taken to stabilize any disturbed areas promptly after construction, and all necessary precautions shall be taken to prevent contamination of the stream or waterbody by silt, sediment, fuels, solvents, lubricants, or any other pollutant associated with the project.

DEC No. 3-3720-00217/00003  
Kirk Lake Dam (NYS ID No. 213-0481, Hazard Class B)  
Kirk Lake (Waters Index No. H-31-P 44-14-7-P 52, Class B)  
Trib. To Muscoot River (Waters Index No. H-31-P 44-14-7, Class A)  
Town of Carmel, Putnam County

This determination does not, however, relieve you of any requirements under any other applicable laws which may exist. You are advised to contact all appropriate Federal, State and/or local agencies for any approvals that may be required.

If you have any questions or comments in regard to this letter, or your responsibilities under the New York State Environmental Conservation Law, please do not hesitate to contact this office.

Sincerely,



Michael Grosso  
Michael Grosso  
Environmental Analyst Trainee  
Division of Environmental Permits

ecc: J. Bueno-Galdo, AECOM  
S. Braymer, Dam Safety  
K. McKean, Habitat







CEMENT &amp; CONCRETE PRODUCTS™

## C1: Portland Cement Based Concrete Products

### SAFETY DATA SHEET

(Complies with OSHA 29 CFR 1910.1200)

#### SECTION I: PRODUCT IDENTIFICATION

The QUIKRETE® Companies  
5 Concourse Parkway, Suite 1900  
Atlanta, GA 30328

Emergency Telephone Number  
INFOTRAC (800) 535-5053  
Information Telephone Number  
(800) 282-5828

SDS C1

Revision: Feb-18

<b>QUIKRETE® Product Name</b>	<b>Item #(s)</b>
Fence Post Mix	1005
Fiber-Reinforced Concrete Mix	1006
Crack Resistant Concrete Mix	1006-80
Pro-Finish Crack Resistant Concrete Mix	1006-68
QUIKRETE 5000 Concrete Mix	1007
QUIKRETE 6000 Concrete Mix	1007
Pro-Finish QUIKRETE 5000	1007-85
Lightweight Concrete Mix	1008
Basic Concrete Mix	1015
Maximum Yield Concrete Mix	1100-80
Concrete Mix	1101-10, -20, -40, -60, -80, -90
Green Concrete Mix	1101-63, -73
B-Crete	1101-81
Red-E-Crete Concrete mix	1101-91, -87; 1141-62, -63, -92, -93, Bulk NR810035
Countertop Mix	1106-80
Form & Pour Concrete Mix	1120-80/NR810065
Form & Pour Concrete Mix MS	1120-80/NR810065
All-Star Concrete Mix	1121
Rip Rap	1129
Rip Rap Scrim	1134-80
Handicrete Concrete Mix	1141-59, -60, -80
RiteMix Concrete	1171-60
Fiber Reinforced Deck Mix	1251-80, -81
All-Star Crack Resistant Concrete Mix	1470-03
All-Star 5000 Concrete Mix	1470-01
FlowCrete 5000 (Mix 801)	8080026/NR80026
Mix 801 Concrete Mix	NR81001

**Product Use:** Portland cement-based, aggregated products for general construction

SDS C1

QUIKRETE Companies, LLC

2/7/2018

See most current revision of this document at [www.QUIKRETE.com](http://www.QUIKRETE.com).

---

**SECTION II - HAZARD IDENTIFICATION**

---

**Hazard-determining components of labeling:** Silica, Portland cement

**2.1 Classification of the substance or mixture**

Carcinogen – Category 1A

Skin Corrosion – Category 1B

Eye Damage – Category 1

Skin Sensitization – Category 1B

Specific Target Organ Toxicity Repeat Exposure – Category 1

Specific Target Organ Toxicity: Single Exposure – Category 3

**2.2a Signal word DANGER!**

**2.2b Hazard Statements**

May cause cancer through chronic inhalation

Causes severe skin burns and serious eye damage

May cause an allergic skin reaction

Causes damage to lungs through prolonged or repeated inhalation

May cause respiratory irritation

Harmful if swallowed.

**2.2c Pictograms**



**2.2d Precautionary statements**

Do not handle until all safety precautions have been read and understood.

Wear impervious gloves, such as nitrile. Wear eye protection, and protective clothing.

Do not eat, drink or smoke when using this product.

Wash thoroughly after handling.

Use only in a well-ventilated area. Wear a NIOSH approved respirator (mask) such as N95 in poorly ventilated areas, when used for extended periods, when use is frequent, or when permissible exposure limits may be exceeded.

Do not breathe dust.

If swallowed: Rinse mouth. Do NOT induce vomiting.

**CEMENT & CONCRETE PRODUCTS™**

If inhaled: Remove person to fresh air and keep comfortable for breathing.

If in eyes: Rinse cautiously with water for several minutes. Remove contact lenses, if present and easy to do. Continue rinsing.

If on skin (or hair): Remove immediately all contaminated clothing and wash before re-use. Rinse skin or hair with water.

If significant skin irritation or rash occurs: get medical advice or attention.

**Immediately seek medical advice or attention if symptoms are significant or persist.**

Store in a well-ventilated place. Keep container tightly closed.

Dispose of contents/containers in accordance with all regulations.

### 2.3 Additional Information

The Portland cement in this product can cause serious, potentially irreversible damage to skin, eye, respiratory and digestive tracts due to chemical (caustic) burns, including third degree burns.

Burns from Portland cement may not cause immediate pain or discomfort. You cannot rely on pain to alert you to cement burns. Portland cement can cause dermatitis or sensitization. Therefore precautions must be taken to prevent all contact with Portland cement. Cement burns can become worse even after contact has ended. If there is contact with this product, immediately remove all product from body and thoroughly rinse with water. If you experience or suspect a cement burn or inflammation you should immediately see a health care professional.

Skin burns and irritation may be caused by brief exposure, though often are caused by extended exposure of 15 minutes, an hour, or longer. Interaction of Portland cement with water or sweat releases a caustic solution which produces the burns or irritation. Any extended exposure should be treated as though a burn has occurred until determined otherwise.

Skin contact with Portland cement can also cause inflammation of the skin, referred to as dermatitis. Signs and symptoms of dermatitis can include itching, redness, swelling, blisters, scaling, and other changes in the normal condition of the skin. Signs and symptoms of burns include the above and whitening, yellowing, blackening, peeling or cracking of skin.

The Portland cement in this product may cause allergic contact dermatitis in sensitized individuals. This overreaction of the immune system can lead to severe inflammation. Sensitization may result from a single exposure to the low levels of Cr (VI) in Portland cement or repeated exposures over months or years. Sensitization is long lasting and, after sensitization, even very small quantities can trigger the dermatitis. Sensitization is uncommon. Individuals who experience skin problems, including seemingly minor ones, are advised to seek medical attention.

**2.3a HNOC – Hazards not otherwise classified:** Not applicable

**2.3b Unknown Acute Toxicity:** None



**CEMENT & CONCRETE PRODUCTS™****SECTION III - HAZARDOUS INGREDIENTS/IDENTITY INFORMATION**

<u>Hazardous Components</u>	<u>CAS No.</u>	<u>% by Weight</u>
Sand, Silica, Quartz	14808-60-7	60-100*
Portland Cement	65997 15 1	10-30*
Fly Ash	68131-74-8	5-10*

\*The concentrations ranges are provided due to batch-to-batch variability.  
None of the constituents of this material are of unknown toxicity.

**SECTION IV – FIRST AID MEASURES****4.1 Description of the first-aid measures****General information:**

**After inhalation:** Remove person to fresh air. If breathing is difficult, administer oxygen. If not breathing, give artificial respiration. In case of unconsciousness, place patient stably in side position for transportation.

**After skin contact:** Wash skin with cool water and pH-neutral soap or a mild detergent. If significant skin irritation or rash occurs: get medical advice or attention.

**After eye contact:** Rinse cautiously with water for several minutes. Remove contact lenses, if present and easy to do. Continue rinsing.

**After swallowing:** Do not induce vomiting. If conscious, have the victim drink plenty of water and call a physician immediately. Never give anything by mouth to an unconscious person.

**4.2 Most important symptoms/effects, acute and delayed**

**Inhalation:** May cause respiratory tract irritation. Causes damage to organs through prolonged or repeated inhalation. This product contains crystalline silica. Prolonged or repeated inhalation of respirable silica from this product can cause silicosis.

**Skin contact:** Skin burns and irritation may be caused by brief exposure, though often are caused by extended exposure of 15 minutes, an hour, or longer.

**Eye Contact:** Causes serious eye damage. Symptoms may include discomfort or pain, excess blinking and tear production, with marked redness and swelling of the conjunctiva.

**Ingestion:** May be harmful if swallowed. Ingestion may cause discomfort and/or distress, nausea or vomiting.

**4.3 Indication of immediate medical attention and special treatment needed:**

Immediately seek medical advice or attention if symptoms are significant or persist.

**SECTION V - FIRE FIGHTING MEASURES**

**5.1 Flammability of the Product:** Non-flammable and non-combustible

**5.2 Suitable extinguishing agents:** Treat for surrounding material

**5.3 Special hazards arising from the substance or mixture:** None



**CEMENT & CONCRETE PRODUCTS™**

**5.3a Products of Combustion:** None

**5.3b Explosion Hazards in Presence of Various Substances:** Non-explosive in presence of shocks

---

**SECTION VI – ACCIDENTAL RELEASE MEASURES**

---

**6.1 Personal precautions, protective equipment and emergency procedures:** Wear personal protective equipment (See section VIII). Keep unprotected persons away.

**6.2 Methods and material for containment and cleaning up:**

Do not allow to enter sewers/ surface or ground water. Dispose of unwanted materials and containers properly in accordance with all regulations.

---

**SECTION VII - PRECAUTIONS FOR SAFE HANDLING AND STORAGE**

---

**7.1 Handling**

**Precautions for safe handling:** Ensure good ventilation/exhaustion at the workplace. DO NOT BREATHE DUST. In dusty environments, the use of an OSHA, MSHA or NIOSH approved respirator and tight fitting goggles is recommended. Wear appropriate PPE (See section 8). Do not mix with other chemical products, except as indicated by the manufacturer. Do not get in eyes, on skin or clothing. Good housekeeping is important to prevent accumulation of dust.

**7.2 Storage**

**Requirements to be met by storerooms and receptacles:** No special requirements.

**Information about storage in one common storage facility:** Not required.

**Further information about storage conditions:** Keep out of the reach of children. Keep container tightly closed and prevent exposure to humidity. Do not allow water to contact the product until time of use to preserve product utility.

---

**SECTION VIII – EXPOSURE CONTROL MEASURES / PERSONAL PROTECTION**

---

**8.1 Components with limit values that require monitoring at the workplace:**

Hazardous Components	CAS No.	PEL (OSHA) mg/M <sup>3</sup>	TLV (ACGIH) mg/M <sup>3</sup>
Silica Sand, crystalline	14808-60-7	0.1	0.025 (resp)
Portland Cement	65997-15-1	5 (resp) 15 (total)	10 (resp)
Fly Ash	68131-74-8	N/A	N/A

**8.2 Exposure Controls**

Use ventilation adequate to keep exposures below recommended exposure limits.

**CEMENT & CONCRETE PRODUCTS™****8.3 General protective and hygienic measures**

Keep away from foodstuffs, beverages and feed. Immediately remove all soiled and contaminated clothing. Wash hands before breaks and at the end of work. Avoid contact with the eyes and skin.

**8.3a Personal protective equipment****Protection of hands:**

Wear gloves of adequate length to offer appropriate skin protection from splashes. Nitrile, Butyl and PVC gloves have been found to offer adequate protection for incidental contact. You cannot rely on pain to alert you to cement burns. Portland cement can cause dermatitis or sensitization.

**Eye protection:**

Wear approved eye protection (properly fitted dust- or splash-proof chemical safety glasses).

**Respiratory protection:**

Wear a NIOSH approved respirator (mask) such as N95 in poorly ventilated areas, when used for extended periods, when use is frequent, or when permissible exposure limits may be exceeded. Respirators should be selected by and used under the direction of a trained health and safety professional, following requirements found in OSHA's respirator standard (29 CFR 1910.134) and ANSI's standard for respiratory protection (Z88.2).

---

**SECTION IX - PHYSICAL/CHEMICAL CHARACTERISTICS**

---

**General Information**

<b>Appearance</b>	Form: Granular Solid Color: Gray to gray-brown colored Odor: None
<b>pH-value at 20°C (68 °F):</b>	13 (10%)
<b>Boiling point/Boiling range:</b>	Not applicable
<b>Flash point:</b>	Not applicable
<b>Auto igniting:</b>	Product is not self-igniting
<b>Vapor pressure at 21°C (70°F)</b>	Not available
<b>Density at 25°C (77 °F):</b>	2.6 to 3.15

**Solubility in / Miscibility with**

<b>Water:</b>	Insoluble
<b>VOC content:</b>	0 g/L VOC

---

**SECTION X – STABILITY AND REACTIVITY**

---

**10.1 Reactivity**

No dangerous reaction known under conditions of normal use.

**10.2 Chemical stability**

Stable under normal storage conditions. Keep in dry storage.

**CEMENT & CONCRETE PRODUCTS™****10.3 Possibility of hazardous reaction**

No dangerous reaction known under conditions of normal use.

**10.4 Thermal decomposition / conditions to be avoided**

No decomposition if used according to specifications.

**10.5 Incompatible materials**

Contact of silica with powerful oxidizing agents such as fluorine, chlorine trifluoride, manganese trioxide, or oxygen difluoride may cause fires

**10.6 Hazardous Decomposition or By-products**

Silica will dissolve in Hydrofluoric Acid and produce a corrosive gas – silicon tetrafluoride.

---

**SECTION XI – TOXICOLOGICAL INFORMATION**

---

**11.1 Exposure Routes:** Skin contact, skin adsorption, eye contact, inhalation, or ingestion.

**11.2 Symptoms related to physical/chemical/toxicological characteristics:**

**Inhalation:** May cause respiratory tract irritation. Causes damage to organs through prolonged or repeated exposure. This product contains crystalline silica. Prolonged or repeated inhalation of respirable silica from this product can cause silicosis.

**Skin contact:** Causes severe skin burns. Handling can cause dry skin, discomfort, irritation, and dermatitis. May cause sensitization by skin contact. Product becomes extremely alkaline when exposed to moisture, and can cause alkali burns and affect the mucous membranes.

**Eye Contact:** Causes serious eye damage. Symptoms may include discomfort or pain, excess blinking and tear production, with marked redness and swelling of the conjunctiva.

**Ingestion:** Harmful if swallowed. Ingestion may cause discomfort and/or distress, nausea or vomiting.

**11.3 Delayed, immediate and chronic effects of short-term and long-term exposure****Short Term**

Skin Corrosion/Irritation: Causes severe skin burns.

Serious Eye Damage/Irritation: Causes severe eye damage.

Respiratory Sensitization: Not available

Skin Sensitization: May cause an allergic skin reaction.

Specific Target Organ Toxicity-Single Exposure: (Category 3) May cause respiratory irritation.

Aspiration Hazard: Not available

**Long Term**

Carcinogenicity: May cause cancer through chronic inhalation.

Germ Cell Mutagenicity: Not available

Reproductive Toxicity: Not available

**CEMENT & CONCRETE PRODUCTS™**

Specific Target Organ Toxicity- Repeated Exposure: (Category 1) Causes damage to lungs through prolonged/repeated exposure  
Synergistic/Antagonistic Effects: Not available.

---

**SECTION XII – ECOLOGICAL INFORMATION**

---

**12.1 Ecotoxicity**

May cause long-term adverse effects to the aquatic environment. Do not allow undiluted product or large quantities of it to reach ground water, water course or sewage system. Must not reach bodies of water or drainage ditch undiluted or un-neutralized

**12.2 Persistence and degradability**

No further relevant information available.

**12.3 Bioaccumulative potential:**

No further relevant information available.

**12.4 Mobility in soil**

No further relevant information available.

**12.5 Other Adverse Effects**

No further relevant information available.

---

**SECTION XIII – DISPOSAL CONSIDERATIONS**

---

**13.1 Waste Disposal Method**

The packaging and material may be land filled; however, material should be covered to minimize generation of airborne dust. This product is not classified as a hazardous waste under the authority of the RCRA (40CFR 261) or CERCLA (40CFR 117&302). Disposal must be made in accordance with local, state and federal regulations.

**13.2 Other disposal considerations****Uncleaned packaging**

**Recommendation:** Disposal must be made in accordance with local, state and federal regulations.

**Recommended cleansing agent:** Water, if necessary with cleansing agents.

---

**SECTION XIV – TRANSPORT INFORMATION**

---

	<b>DOT (U.S.)</b>	<b>TDG (Canada)</b>
<b>UN-Number</b>	Not Regulated	Not Regulated
<b>UN proper shipping name</b>	Not Regulated	Not Regulated
<b>Transport Hazard Class(es)</b>	Not Regulated	Not Regulated
<b>Packing Group (if applicable)</b>	Not Regulated	Not Regulated

**14.1 Environmental hazards:**

Not Available

**14.2 Transport in bulk according to Annex II of Marpol 73/78 and the IBC Code**

Not available

**14.3 Special precautions for user**

Do not handle until all safety precautions have been read and understood.

---

**SECTION XV – OTHER REGULATORY INFORMATION**

---

**15.1 Safety, Health and Environmental Regulations/Legislations specific for the chemical****Canada**

**WHMIS Classification:** Considered to be a hazardous material under the Hazardous Products Act as defined by the Hazardous Products Regulations and subject to the requirements of Health Canada's Workplace Hazardous Material Information (WHMIS). This document complies with the WHMIS requirements of the Hazardous Products Act (HPA) and the HPR.

**15.2 US Federal Information****SARA 302/311/312/313 Components**

No chemicals in this material are subject to the reporting requirements of SARA Title III, Section 302, 311, 312 or 313.

**RCRA:** Crystalline silica (quartz) is not classified as a hazardous waste under the Resource Conservation and Recovery Act, or its regulations, 40 CFR §261 et seq.

**CERCLA:** Crystalline silica (quartz) is not classified as a hazardous substance under regulations of the Comprehensive Environmental Response Compensation and Liability Act (CERCLA), 40 CFR §302.

**Emergency Planning and Community Right to Know Act (SARA Title III):** Crystalline silica (quartz) is not an extremely hazardous substance under Section 302 and is not a toxic chemical subject to the requirements of Section 313.

**FDA:** Silica is included in the list of substances that may be included in coatings used in food contact surfaces, 21 CFR §175.300(b)(3)(xxvi).

**NTP:** Respirable crystalline silica, primarily quartz dusts occurring in industrial and occupational settings, is classified as Known to be a Human Carcinogen.

**OSHA Carcinogen:** Crystalline silica (quartz) is not listed.

**CEMENT & CONCRETE PRODUCTS™****15.3 State Right to Know Laws****California Prop. 65 Components**

**WARNING:** This product can expose you to chemicals including crystalline silica which is known to the State of California to cause cancer and hexavalent chromium compounds which are known to the State of California to cause birth defects or other reproductive harm. For more information go to [www.P65Warnings.ca.gov](http://www.P65Warnings.ca.gov).

**California Inhalation Reference Exposure Level (REL):** California established a chronic REL of 3 µg for silica (crystalline, respirable). A chronic REL is an airborne level of a substance at or below which no adverse health effects are anticipated in individuals indefinitely exposed to the substance at that level.

**Massachusetts Toxic Use Reduction Act:** Silica, crystalline (respirable size, <10 microns) is "toxic" for purposes of the Massachusetts Toxic Use Reduction Act.

**15.4 Global Inventories**

**DSL** All components of this product are on the Canadian DSL list.

**TSCA No.:** Crystalline silica (quartz) appears on the EPA TSCA inventory under the CAS No. 14808-60-7. All constituents are listed in the TSCA inventory.

---

**SECTION XVI – OTHER INFORMATION**

---

**Last Updated: February 7, 2018**

**NOTE:** The information and recommendations contained herein are based upon data believed to be correct. However, no guarantee or warranty of any kind, express or implied, is made with respect to the information contained herein. We accept no responsibility and disclaim all liability for any harmful effects which may be caused by exposure to silica contained in our products.

Prepared by

The QUIKRETE Companies, LLC

**End of SDS**



Vincent Sapienza  
Commissioner

Paul Costa, P.E.  
Portfolio Manager  
Bureau of Engineering  
Design & Construction  
[pcosta@dep.nyc.gov](mailto:pcosta@dep.nyc.gov)

96-05 Horace Harding  
Expressway  
Corona, NY 11368  
T: (718) 595-5470  
F: (718) 595-5997

August 6, 2018

Ms. Rose Trombetta  
Planning Office  
Carmel Town Hall  
60 McAlpin Ave.  
Mahopac, NY 10541

Re: Wetland Permit Application, Kirk Lake Dam Test Borings

Dear: Ms. Trombetta:

Pursuant to the ECB meeting of August 2, 2018, we offer the following additional information regarding planned test borings at the Kirk Lake dam.

The permit application was submitted only for the proposed boring work at Kirk Lake Dam. The Drilling Program Plan (DPP) that was previously submitted for this permit application was prepared for two NYCDEP projects (Kirk Lake dam and Lower Chia Lin dam) that will be progressed concurrently. Any specific references to Lower Chia Lin dam in the DPP are not relevant to the wetland permit application for Kirk Lake dam.

Spill protection, as indicated in Section 2.4.3 of the DPP will be provided. Specifically, "a drip pan will be placed under the drill rig to collect any drippings of oil, hydraulic fluid, etc. The drip pan will be underlain by continuous plastic sheeting extending the full width and length of the drill rig. A "curb" will be created along the perimeter of the plastic sheeting using lumber or similar means to contain potential spillage and prevent discharge to surrounding areas." This protection will be provided at all times, including overnight and weekends. Additionally, the driller is required to keep a spill kit on site at all times.

As indicated in Appendix D of the DPP, the grout mix will for piezometer installation will include:

- Water
- Portland Cement, Type 1 or 2
- Bentonite powder: Baroid Aquagel Gold Seal or Quickgel.

The grout will be proportioned at 2.5 water: 1 cement: 0.3 bentonite, by weight. MSDS sheets for the proposed Portland cement and bentonite powder are attached.

The following are attached as requested:

- Diller's license/permit and insurance
- Driller's purchase order
- MSDS and Cut sheets for the grout mix



Should you have any questions, please contact me at 718-595-5470 or, Mr. Thomas Boland Jr., Dam Safety Engineer at (914) 455-3256.

Sincerely,

A handwritten signature in black ink, appearing to read "L. Costa" with a stylized flourish at the end.

Paul Costa, P.E.  
Portfolio Manager

**CITY OF NEW YORK SUBCONTRACTOR APPROVAL FORM**

For subcontracts to be approved AFTER contract registration  
 Column on left indicates whom that section is to be completed by

741805  
 12063(JL)

**PRIME CONTRACT INFORMATION**

AGENCY

Agency: DEP	Unit/Div: BEDC	Registration # CTC 826 20131427412
		Registration Date: June 14, 2013
Contract No.: EE-DSGN-3A-DES-CM (Class B Dams)	PIN: 82613WP01252	
Contract Description: Design and CM Services During Construction for Various WW and Clean Water Projects		
Contract Subject to a Project Labor Agreement (PLA) YES <input type="checkbox"/> NO <input checked="" type="checkbox"/>		

**PRIME CONTRACTOR IDENTIFICATION**

Name: AECOM USA, Inc.	EIN/SSN: 13-5511947
-----------------------	---------------------

**SUBCONTRACTOR INFORMATION**

PRIME CONTRACTOR

Company Name: Craig Geotechnical Drilling, Inc.	PIP Vendor #: VC00118234
Contact (please print): Kevin Craig	Title: Division Manager
Phone: 609.625.4862	Fax:
Address: 5435 Harding Highway	City: Mays Landing State/Zip: NJ/08330
EIN/SSN: 20-5933314	E-Mail: KCraig@CraigTest.com
Subcontract Description: Sub shall provide Geotechnical Drilling drilling with sampling, installation of piezometers, and laboratory testing at Lower Chia Lin Dam, Lake Kirk Dam, and Lake Gleneida Dam.	
Subcontract Value: \$61,985.00	Start Date: 04/01/2016 End Date: 09/30/2016
Subcontractor Signed Letter of Assent <input type="checkbox"/> (If Prime Contract is subject to a Project Labor Agreement)	
Subcontractor is DSBS-certified as: M/WBE <input type="checkbox"/> EBE <input type="checkbox"/> or LBE <input type="checkbox"/> (check all that apply & note status below)	
YES <input type="checkbox"/>	Application Pending <input type="checkbox"/> Intends to Apply <input type="checkbox"/> NO <input checked="" type="checkbox"/>
Subcontractor Prevailing Wage or Living Wage Statement (if applicable) <input type="checkbox"/>	
Primary Trades to be used (list all) Drilling	
Subcontractor's Experience Modification Rating (EMR): .905 (Letter from insurance carrier to verify rating must be included).	
Prime Contractor Certification: I hereby affirm that the information supplied is true and correct.	
Signature	Title Vice President
Print Name Paul Storella	Date February 3, 2016
Email Paul.Storella@aecom.com	Phone 212.984.7379

**AGENCY PRELIMINARY REVIEW**  
 PLEASE SEE PAGE 2 FOR INSTRUCTIONS

AGENCY

Agency Preliminary Review Completed By: \_\_\_\_\_ Date \_\_\_\_\_

1. VENDEX  2. Employment  3. References  4. PLA  5. Apprenticeship  6. Licenses

**PRIME CONTRACTOR RESPONSE**

PRIME

For each of the boxes checked in the agency preliminary response above, I have informed the Subcontractor of all relevant requirements and provided all requested documentation.

**AGENCY FINAL RESPONSE**

AGENCY

Final Agency Approval: Granted  Denied

Signature: Date: 4/20/16

If Subcontracted Amount Has Changed, Please Enter The Revised Amount And IR #

PAC/PIP

# MATERIAL SAFETY DATA SHEET

**Product Trade Name:** QUIK-GEL GOLD®

**Revision Date:** 07-Feb-2014

## 1. IDENTIFICATION OF THE SUBSTANCE/PREPARATION AND OF THE COMPANY/UNDERTAKING

**Statement of Hazardous Nature** Hazardous according to the criteria of NOHSC, Dangerous Goods according to the criteria of ADG. Hazardous according to the criteria of NOHSC, Non-Dangerous Goods according to the criteria of ADG.

**Manufacturer/Supplier** Halliburton/Baroid Australia Pty. Ltd.  
15 Marriott Road  
Jandakot  
WA 6164  
Australia

ACN Number: 009 000 775  
Telephone Number: 61 (08) 9455 8300  
Fax Number: 61 (08) 9455 5300

**Product Emergency Telephone**

Australia: 08-64244950  
Papua New Guinea: 05 1 281 575 5000  
New Zealand: 06-7559274

**Fire, Police & Ambulance - Emergency Telephone**

Australia: 000  
Papua New Guinea: 000  
New Zealand: 111

### Identification of Substances or Preparation

**Product Trade Name:** QUIK-GEL GOLD®  
**Synonyms:** None  
**Chemical Family:** Mineral  
**UN Number:** None  
**Dangerous Goods Class:** None  
**Subsidiary Risk:** None  
**Hazchem Code:** None Allocated  
**Poisons Schedule:** None Allocated  
**Application:** Viscosifier

**Prepared By** Chemical Compliance  
Telephone: 1-580-251-4335  
e-mail: fdunexchem@halliburton.com

## 2. HAZARDS IDENTIFICATION

**Statement of Hazardous Nature** Hazardous according to the criteria of NOHSC, Dangerous Goods according to the criteria of ADG. Hazardous according to the criteria of NOHSC, Non-Dangerous Goods according to the criteria of ADG.

**Hazard Overview****CAUTION! - ACUTE HEALTH HAZARD**

May cause eye and respiratory irritation.

**DANGER! - CHRONIC HEALTH HAZARD**

Breathing crystalline silica can cause lung disease, including silicosis and lung cancer. Crystalline silica has also been associated with scleroderma and kidney disease.

This product contains quartz, cristobalite, and/or tridymite which may become airborne without a visible cloud. Avoid breathing dust. Avoid creating dusty conditions. Use only with adequate ventilation to keep exposures below recommended exposure limits. Wear a NIOSH certified, European Standard EN 149, or equivalent respirator when using this product. Review the Material Safety Data Sheet (MSDS) for this product, which has been provided to your employer.

**Classification**

T - Toxic.

**Risk Phrases**

R49 May cause cancer by inhalation.  
R48/20 Harmful: danger of serious damage to health by prolonged exposure through inhalation.

**Safety Phrases**

S22 Do not breathe dust.

**HSNO Classification**

6.7A Known or presumed human carcinogens  
6.9A Toxic to human target organs or systems

**3. COMPOSITION/INFORMATION ON INGREDIENTS**

Substances	CAS Number	PERCENT (w/w)	Australia	NOHSC	New Zealand	ACGIH TLV-TWA
			WES			
Bentonite	1302-78-9	60 - 100%	Not applicable	Not applicable	Not applicable	TWA: 1 mg/m <sup>3</sup>
Crystalline silica, quartz	14808-60-7	1 - 5%	TWA: 0.1 mg/m <sup>3</sup>	TWA: 0.1 mg/m <sup>3</sup>	TWA: 0.2 mg/m <sup>3</sup>	TWA: 0.025 mg/m <sup>3</sup>
Crystalline silica, cristobalite	14464-46-1	0 - 1%	TWA: 0.1 mg/m <sup>3</sup>	TWA: 0.1 mg/m <sup>3</sup>	TWA: 0.1 mg/m <sup>3</sup>	TWA: 0.025 mg/m <sup>3</sup>
Crystalline silica, tridymite	15468-32-3	0 - 1%	TWA: 0.1 mg/m <sup>3</sup>	TWA: 0.1 mg/m <sup>3</sup>	TWA: 0.1 mg/m <sup>3</sup>	0.05 mg/m <sup>3</sup>

**Non-Hazardous Substance to Total of 100%****4. FIRST AID MEASURES****Inhalation**

If inhaled, remove from area to fresh air. Get medical attention if respiratory irritation develops or if breathing becomes difficult.

**Skin**

Wash with soap and water. Get medical attention if irritation persists.

**Eyes**

In case of contact, immediately flush eyes with plenty of water for at least 15 minutes and get medical attention if irritation persists.

**Ingestion**

Under normal conditions, first aid procedures are not required.

**Notes to Physician**

Treat symptomatically.

**5. FIRE FIGHTING MEASURES**

**Suitable Extinguishing Media**

All standard fire fighting media

**Extinguishing media which must not be used for safety reasons**

None known.

**Special Exposure Hazards** Not applicable.

**Special Protective Equipment for Fire-Fighters** Not applicable.

**6. ACCIDENTAL RELEASE MEASURES**

**Personal Precautionary Measures** Use appropriate protective equipment. Avoid creating and breathing dust.

**Environmental Precautionary Measures** None known.

**Procedure for Cleaning / Absorption** Collect using dustless method and hold for appropriate disposal. Consider possible toxic or fire hazards associated with contaminating substances and use appropriate methods for collection, storage and disposal.

**7. HANDLING AND STORAGE**

**Handling Precautions** This product contains quartz, cristobalite, and/or tridymite which may become airborne without a visible cloud. Avoid breathing dust. Avoid creating dusty conditions. Use only with adequate ventilation to keep exposure below recommended exposure limits. Wear a NIOSH certified, European Standard En 149, or equivalent respirator when using this product. Material is slippery when wet.

**Storage Information** Do not reuse empty container. Use good housekeeping in storage and work areas to prevent accumulation of dust. Close container when not in use. Keep from excessive heat. Product has a shelf life of 24 months.

**8. EXPOSURE CONTROLS/PERSONAL PROTECTION**

**Engineering Controls** Use approved industrial ventilation and local exhaust as required to maintain exposures below applicable exposure limits.

**Personal Protective Equipment** If engineering controls and work practices cannot prevent excessive exposures, the selection and proper use of personal protective equipment should be determined by an industrial hygienist or other qualified professional based on the specific application of this product.

**Respiratory Protection** Not normally needed. But if significant exposures are possible then the following respirator is recommended:  
Dust/mist respirator. (N95, P2/P3)

**Hand Protection** Normal work gloves.

**Skin Protection** Wear clothing appropriate for the work environment. Dusty clothing should be laundered before reuse. Use precautionary measures to avoid creating dust when removing or laundering clothing.

**Eye Protection** Wear safety glasses or goggles to protect against exposure.

Other Precautions

None known.

## 9. PHYSICAL AND CHEMICAL PROPERTIES

<b>Physical State:</b>	Powder
<b>Color:</b>	Tan
<b>Odor:</b>	Mild earthy
<b>pH:</b>	8.5-9.5 (3%)
<b>Specific Gravity @ 20 C (Water=1):</b>	2.5 - 2.6
<b>Density @ 20 C (kg/l):</b>	Not Determined
<b>Bulk Density @ 20 C (kg/M3):</b>	Not Determined
<b>Boiling Point/Range (C):</b>	Not Determined
<b>Freezing Point/Range (C):</b>	Not Determined
<b>Pour Point/Range (C):</b>	Not Determined
<b>Flash Point/Range (C):</b>	Not Determined
<b>Flash Point Method:</b>	Not Determined
<b>Autoignition Temperature (C):</b>	Not Determined
<b>Flammability Limits in Air - Lower (g/m<sup>3</sup>):</b>	Not Determined
<b>Flammability Limits in Air - Lower (%):</b>	Not Determined
<b>Flammability Limits in Air - Upper (g/m<sup>3</sup>):</b>	Not Determined
<b>Flammability Limits in Air - Upper (%):</b>	Not Determined
<b>Vapor Pressure @ 20 C (mmHg):</b>	Not Determined
<b>Vapor Density (Air=1):</b>	Not Determined
<b>Percent Volatiles:</b>	Not Determined
<b>Evaporation Rate (Butyl Acetate=1):</b>	Not Determined
<b>Solubility in Water (g/100ml):</b>	Slightly soluble
<b>Solubility in Solvents (g/100ml):</b>	Not Determined
<b>VOCs (g/l):</b>	Not Determined
<b>Viscosity, Dynamic @ 20 C (centipoise):</b>	Not Determined
<b>Viscosity, Kinematic @ 20 C (centistokes):</b>	Not Determined
<b>Partition Coefficient/n-Octanol/Water:</b>	Not Determined
<b>Molecular Weight (g/mole):</b>	Not Determined
<b>Decomposition Temperature (C):</b>	Not Determined

## 10. STABILITY AND REACTIVITY

<b>Stability Data:</b>	Stable
<b>Hazardous Polymerization:</b>	Will Not Occur
<b>Conditions to Avoid</b>	None anticipated
<b>Incompatibility (Materials to Avoid)</b>	Hydrofluoric acid.
<b>Hazardous Decomposition Products</b>	Amorphous silica may transform at elevated temperatures to tridymite (870 C) or cristobalite (1470 C).
<b>Additional Guidelines</b>	Not Applicable

## 11. TOXICOLOGICAL INFORMATION

**Principle Route of Exposure** Eye or skin contact, inhalation.

Symptoms related to exposure  
Acute Toxicity

**Inhalation**

Inhaled crystalline silica in the form of quartz or cristobalite from occupational sources is carcinogenic to humans (IARC, Group 1). There is sufficient evidence in experimental animals for the carcinogenicity of tridymite (IARC, Group 2A).

Breathing silica dust may cause irritation of the nose, throat, and respiratory passages. Breathing silica dust may not cause noticeable injury or illness even though permanent lung damage may be occurring. Inhalation of dust may also have serious chronic health effects (See "Chronic Effects/Carcinogenicity" subsection below).

**Eye Contact**

May cause eye irritation.

**Skin Contact**

May cause mechanical skin irritation.

**Ingestion**

None known

**Chronic Effects/Carcinogenicity**

**Silicosis:** Excessive inhalation of respirable crystalline silica dust may cause a progressive, disabling, and sometimes-fatal lung disease called silicosis. Symptoms include cough, shortness of breath, wheezing, non-specific chest illness, and reduced pulmonary function. This disease is exacerbated by smoking. Individuals with silicosis are predisposed to develop tuberculosis.

**Cancer Status:** The International Agency for Research on Cancer (IARC) has determined that crystalline silica inhaled in the form of quartz or cristobalite from occupational sources can cause lung cancer in humans (Group 1 - carcinogenic to humans) and has determined that there is sufficient evidence in experimental animals for the carcinogenicity of tridymite (Group 2A - possible carcinogen to humans). Refer to IARC Monograph 68, Silica, Some Silicates and Organic Fibres (June 1997) in conjunction with the use of these minerals. The National Toxicology Program classifies respirable crystalline silica as "Known to be a human carcinogen". Refer to the 9th Report on Carcinogens (2000). The American Conference of Governmental Industrial Hygienists (ACGIH) classifies crystalline silica, quartz, as a suspected human carcinogen (A2).

There is some evidence that breathing respirable crystalline silica or the disease silicosis is associated with an increased incidence of significant disease endpoints such as scleroderma (an immune system disorder manifested by scarring of the lungs, skin, and other internal organs) and kidney disease.

**Toxicology data for the components**

Substances	CAS Number	LD50 Oral	LD50 Dermal	LC50 Inhalation
Bentonite	1302-78-9	5000 mg/kg ( Rat )	No data available	No data available
Crystalline silica, quartz	14808-60-7	500 mg/kg ( Rat )	No data available	No data available
Crystalline silica, cristobalite	14464-46-1	No data available	No data available	No data available
Crystalline silica, tridymite	15468-32-3	No data available	No data available	No data available

**12. ECOLOGICAL INFORMATION****Ecotoxicological Information****Ecotoxicity Product**

**Acute Fish Toxicity:** TLM96: 10000 ppm (Oncorhynchus mykiss)  
**Acute Crustaceans Toxicity:** Not determined  
**Acute Algae Toxicity:** Not determined

**Ecotoxicity Substance**

Substances	CAS Number	Toxicity to Algae	Toxicity to Fish	Toxicity to Microorganisms	Daphnia Magna (Water Flea)
Bentonite	1302-78-9	No information available	TLM96: 10000 ppm (Oncorhynchus mykiss)	No information available	No information available

Crystalline silica, quartz	14808-60-7	No information available	No information available	No information available	No information available
Crystalline silica, cristobalite	14464-46-1	No information available	No information available	No information available	No information available
Crystalline silica, tridymite	15468-32-3	No information available	No information available	No information available	No information available

**12.2 Persistence and degradability**

No information available

**12.3 Bioaccumulative potential**

No information available

**12.4 Mobility in soil**

No information available

**12.5 Results of PBT and vPvB assessment**

No information available.

**12.6 Other adverse effects**

**13. DISPOSAL CONSIDERATIONS**

**Disposal Method**                      If practical, recover and reclaim, recycle, or reuse by the guidelines of an approved local reuse program. Should contaminated product become a waste, dispose of in a licensed industrial landfill according to federal, state, and local regulations.

**Contaminated Packaging**              Follow all applicable national or local regulations.

**14. TRANSPORT INFORMATION**

**Land Transportation**

**ADR**  
Not restricted

**Air Transportation**

**ICAO/IATA**  
Not restricted

**Sea Transportation**

**IMDG**  
Not restricted

**Other Transportation Information**

**Labels:**                                      None

**15. REGULATORY INFORMATION**

**Chemical Inventories**

**Australian AICS Inventory**              All components listed on inventory or are exempt.  
**New Zealand Inventory of Chemicals**              All components listed on inventory or are exempt.  
**US TSCA Inventory**                      All components listed on inventory or are exempt.



<b>EINECS Inventory</b>	This product, and all its components, complies with EINECS
<b>Classification</b>	T - Toxic.
<b>Risk Phrases</b>	R49 May cause cancer by inhalation. R48/20 Harmful: danger of serious damage to health by prolonged exposure through inhalation.
<b>Safety Phrases</b>	S22 Do not breathe dust.

## 16. OTHER INFORMATION

The following sections have been revised since the last issue of this SDS  
Not applicable

### Contact

#### Australian Poisons Information Centre

24 Hour Service: - 13 11 26  
Police or Fire Brigade: - 000 (exchange): - 1100

#### New Zealand National Poisons Centre

0800 764 766

### Additional Information

For additional information on the use of this product, contact your local Halliburton representative.

For questions about the Safety Data Sheet for this or other Halliburton products, contact Chemical Compliance at 1-580-251-4335.

### Disclaimer Statement

This information is furnished without warranty, expressed or implied, as to accuracy or completeness. The information is obtained from various sources including the manufacturer and other third party sources. The information may not be valid under all conditions nor if this material is used in combination with other materials or in any process. Final determination of suitability of any material is the sole responsibility of the user.

**\*\*\*END OF MSDS\*\*\***

As set forth under New York State Environmental Conservation Law, Section 15-1525

## Craig Geotechnical Drilling Co, Inc Registration# NYRD10889

is hereby registered with

### the Commissioner of the State Department of Environmental Conservation

to drill or repair water wells in the State of New York only when supervised on-site by an individual who is exam certified in the respective water well activity. In accordance with the law and prior to commencement of drilling of any water well or wells, registrant shall file a preliminary notice with the Department. Registrant is required, upon completion of the drilling of any well(s), to file a completion report with the Department giving the log of the well, the size and depth thereof, the capacity of the pump or pumps attached or to be attached thereto, and such other information pertaining to the withdrawal of water and operation of completed well(s) as the Department by its rules and regulations may require. The registration number granted by this certificate must be displayed on the well drilling machinery of this registrant. All water well drilling shall be performed in accordance with standards promulgated by the Commissioner of Health as Appendix 5-B under Public Health Law. Notice is hereby given that all activities authorized by this certificate are subject to the provisions of Article 36-A of the New York State General Business Law.

Registrant: Craig Geotechnical Drilling Co, Inc  
PO Box 427, 5435 Harding Hwy  
Mays Landing, NJ 08330

Issue Date: March 08, 2018

Expiration Date: March 31, 2019

Rev 12/2014

Authorized By:



Mark Klotz, Director  
Division of Water

75.7-3-16

August 23, 2018

To: Environmental Conservation Board

Re: Pickman Boat House Roof Repair

Dear Board Members:

This memo is a summary of the work procedures which will be followed during the Boat House Repairs.

The Boat House is surrounded by ground and or hard surfaces on three sides. The front side faces Lake Mahopac. The inside of the boathouse has space to park one boat.

The first step involved with the job will be to cover the interior parking area with wood planks, plywood and tarping. The front - water side of the boat house will also receive the same protection.

The ground below the other three exterior sides will be covered with a tarp.

The entire perimeter - all four sides, will receive scaffolding.

A container - dumpster will be placed in the driveway which is located approximately 200 feet from the job site.

Debris will be hauled from the boat house by pickup truck and wheel barrow.

Although the boat house is only one storey, the scaffolding will allow for a safer working environment and to catch any errant debris from falling to the ground or into the lake.

For the same reason, a boom will be placed in the front area of the boat house just in case some construction material falls beyond the scaffolding or tarping.

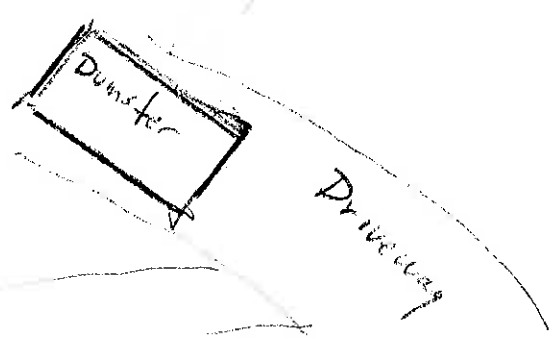
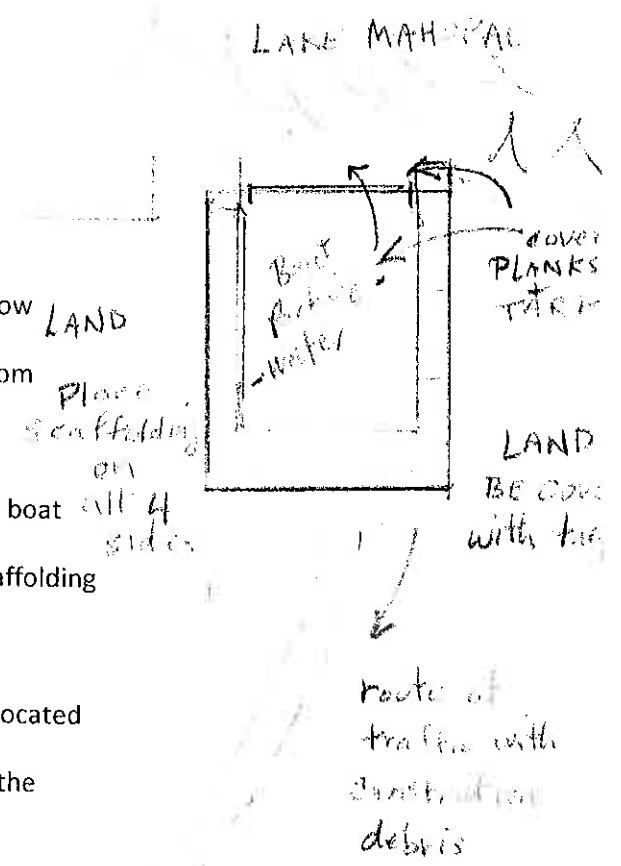
It should also be noted that the septic system for the residence is located several hundred feet from the work area, on the opposite side of the property, and will not in anyway be impacted

by the work or traffic across the lawn.

Thank you.

Robert Weber

Robert Weber



ROBERT LAGA  
Chairman

NICHOLAS FANNIN  
Vice-Chairman

ROSE TROMBETTA  
Secretary

# TOWN OF CARMEL ENVIRONMENTAL CONSERVATION BOARD



60 McAlpin Avenue  
Mahopac, New York 10541  
Tel. (845) 628-1500 - Ext. 190  
www.ci.carmel.ny.us

### BOARD MEMBERS

Edward Barnett  
Vincent Turano  
John Starace

## APPLICATION FOR WETLAND PERMIT OR LETTER OF PERMISSION

Name of Applicant: Gladys Pickman

Address of Applicant: 86 Westlake Blvd, Mahopac Email: \_\_\_\_\_

Telephone# \_\_\_\_\_ Name and Address of Owner if different from Applicant: \_\_\_\_\_

Property Address: 86 Westlake Blvd, Mahopac NY Tax Map # 75.7-3-16  
Agency Submitting Application if Applicable: N/A

Location of Wetland: Lake Mahopac  
Size of Work Section & Specific Location: Shoreline/Repair of Boat House Roof

Will Project Utilize State Owned Lands? If Yes, Specify:  
No

Type and extent of work (feet of new channel, yards of material to be removed, draining, dredging, filling, etc). A brief description of the regulated activity (attach supporting details).  
Replace/Repair Boat House Roof

Proposed Start Date: Sept, 2018 Anticipated Completion Date: Oct, 2018 Fee Paid \$ \_\_\_\_\_  
\*\*\*\*\*

### CERTIFICATION

I hereby affirm under penalty of perjury that information provided on this form is true to the best of my knowledge and belief, false statements made herein are punishable as a Class A misdemeanor pursuant to Section 210.45 of the Penal Law. As a condition to the issuance of a permit, the applicant accepts full legal responsibility for all damage, direct or indirect, or whatever nature, and by whomever suffered, arising out of the project described here-in and agrees to indemnify and save harmless the Town of Carmel from suits, actions, damages and costs of every name and description resulting from the said project.

Gladys Pickman  
SIGNATURE

8/6/18  
DATE

617.20  
Appendix B  
Short Environmental Assessment Form

**Instructions for Completing**

**Part 1 - Project Information.** The applicant or project sponsor is responsible for the completion of Part 1. Responses become part of the application for approval or funding, are subject to public review, and may be subject to further verification. Complete Part 1 based on information currently available. If additional research or investigation would be needed to fully respond to any item, please answer as thoroughly as possible based on current information.

Complete all items in Part 1. You may also provide any additional information which you believe will be needed by or useful to the lead agency; attach additional pages as necessary to supplement any item.

Part 1 - Project and Sponsor Information			
Name of Action or Project: <i>None - Boat House Roof Repair</i>			
Project Location (describe, and attach a location map): <i>86 West Lake Blvd, Mahopac, NY</i>			
Brief Description of Proposed Action: <i>Recent storms caused a tree to fall on the boat house roof. The boat house roof must be replaced.</i>			
Name of Applicant or Sponsor: <i>Samuel Seltzer + Gladys Pickman</i>		Telephone: _____	
Address: <i>86 West Lake Blvd, Mahopac</i>		E-Mail: _____	
City/PO: <i>Mahopac</i>		State: <i>NY</i>	Zip Code: <i>10541</i>
1. Does the proposed action only involve the legislative adoption of a plan, local law, ordinance, administrative rule, or regulation? If Yes, attach a narrative description of the intent of the proposed action and the environmental resources that may be affected in the municipality and proceed to Part 2. If no, continue to question 2.			NO <input checked="" type="checkbox"/> YES <input type="checkbox"/>
2. Does the proposed action require a permit, approval or funding from any other governmental Agency? If Yes, list agency(s) name and permit or approval: <i>Carmel Building Dept.</i> <i>Building Permit to repair boat house roof</i>			NO <input type="checkbox"/> YES <input type="checkbox"/>
3.a. Total acreage of the site of the proposed action?		<i>1.6</i> acres	
b. Total acreage to be physically disturbed?		<i>0</i> acres	
c. Total acreage (project site and any contiguous properties) owned or controlled by the applicant or project sponsor?		<i>1.6</i> acres	
4. Check all land uses that occur on, adjoining and near the proposed action.			
<input type="checkbox"/> Urban <input type="checkbox"/> Rural (non-agriculture) <input type="checkbox"/> Industrial <input type="checkbox"/> Commercial <input checked="" type="checkbox"/> Residential (suburban) <input type="checkbox"/> Forest <input type="checkbox"/> Agriculture <input type="checkbox"/> Aquatic <input type="checkbox"/> Other (specify): _____ <input type="checkbox"/> Parkland			



18. Does the proposed action include construction or other activities that result in the impoundment of water or other liquids (e.g. retention pond, waste lagoon, dam)? If Yes, explain purpose and size: _____	NO <input checked="" type="checkbox"/>	YES
19. Has the site of the proposed action or an adjoining property been the location of an active or closed solid waste management facility? If Yes, describe: _____	NO <input checked="" type="checkbox"/>	YES
20. Has the site of the proposed action or an adjoining property been the subject of remediation (ongoing or completed) for hazardous waste? If Yes, describe: _____	NO <input checked="" type="checkbox"/>	YES

**I AFFIRM THAT THE INFORMATION PROVIDED ABOVE IS TRUE AND ACCURATE TO THE BEST OF MY KNOWLEDGE**

Applicant/sponsor name: \_\_\_\_\_ Date: 8/6/18  
 Signature: Gladys Richman

**Part 2 - Impact Assessment.** The Lead Agency is responsible for the completion of Part 2. Answer all of the following questions in Part 2 using the information contained in Part 1 and other materials submitted by the project sponsor or otherwise available to the reviewer. When answering the questions the reviewer should be guided by the concept "Have my responses been reasonable considering the scale and context of the proposed action?"

	No, or small impact may occur	Moderate to large impact may occur
1. Will the proposed action create a material conflict with an adopted land use plan or zoning regulations?		
2. Will the proposed action result in a change in the use or intensity of use of land?		
3. Will the proposed action impair the character or quality of the existing community?		
4. Will the proposed action have an impact on the environmental characteristics that caused the establishment of a Critical Environmental Area (CEA)?		
5. Will the proposed action result in an adverse change in the existing level of traffic or affect existing infrastructure for mass transit, biking or walkway?		
6. Will the proposed action cause an increase in the use of energy and it fails to incorporate reasonably available energy conservation or renewable energy opportunities?		
7. Will the proposed action impact existing: a. public / private water supplies? b. public / private wastewater treatment utilities?		
8. Will the proposed action impair the character or quality of important historic, archaeological, architectural or aesthetic resources?		
9. Will the proposed action result in an adverse change to natural resources (e.g., wetlands, waterbodies, groundwater, air quality, flora and fauna)?		















ROBERT LAGA  
Chairman

NICHOLAS FANNIN  
Vice-Chairman

ROSE TROMBETTA  
Secretary

**TOWN OF CARMEL**  
**ENVIRONMENTAL CONSERVATION BOARD**



60 McAlpin Avenue  
Mahopac, New York 10541  
Tel. (845) 628-1500 - Ext. 190  
www.ci.carmel.ny.us

**BOARD MEMBERS**

Edward Barnett  
Vincent Turano  
John Starace

**APPLICATION FOR WETLAND PERMIT OR LETTER OF PERMISSION**

Name of Applicant: Elisabeth Sabatini & Vincent Scarfone

240 1st Ave. Apt. 3H

Address of Applicant: New York, NY 10009 Email: \_\_\_\_\_

Telephone# 917-208-5479 Name and Address of Owner if different from Applicant: \_\_\_\_\_

Property Address: 799 East Lake B'lv'd Tax Map # 75.43-1-17

Agency Submitting Application if Applicable: \_\_\_\_\_

Location of Wetland: Lake Mahopac

Size of Work Section & Specific Location: Add to existing porch at rear of house

Will Project Utilize State Owned Lands? If Yes, Specify: \_\_\_\_\_

Type and extent of work (feet of new channel, yards of material to be removed, draining, dredging, filling, etc). A brief description of the regulated activity (attach supporting details).

No work in Lake Mahopac or the shore line. Addition to existing porch one story above grade. Only sonotubes will penetrate the ground

Proposed Start Date: 10/1/10 Anticipated Completion Date: 12/1/18 Fee Paid \$ ~~205.00~~ 225.00

**CERTIFICATION**

I hereby affirm under penalty of perjury that information provided on this form is true to the best of my knowledge and belief, false statements made herein are punishable as a Class A misdemeanor pursuant to Section 210.45 of the Penal Law. As a condition to the issuance of a permit, the applicant accepts full legal responsibility for all damage, direct or indirect, or whatever nature, and by whomever suffered, arising out of the project described here-in and agrees to indemnify and save harmless the Town of Carmel from suits, actions, damages and costs of every name and description resulting from the said project.

Elisabeth Sabatini  
SIGNATURE

8/7/18  
DATE

617.20  
Appendix B  
Short Environmental Assessment Form

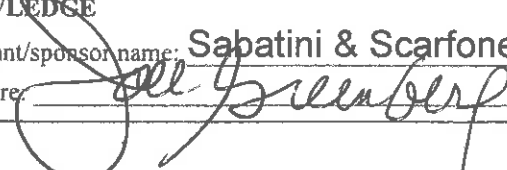
**Instructions for Completing**

**Part 1 - Project Information.** The applicant or project sponsor is responsible for the completion of Part 1. Responses become part of the application for approval or funding, are subject to public review, and may be subject to further verification. Complete Part 1 based on information currently available. If additional research or investigation would be needed to fully respond to any item, please answer as thoroughly as possible based on current information.

Complete all items in Part 1. You may also provide any additional information which you believe will be needed by or useful to the lead agency; attach additional pages as necessary to supplement any item.

<b>Part 1 - Project and Sponsor Information</b>			
Name of Action or Project: <b>Elisabeth Sabatini &amp; Vincent Scarfone</b>			
Project Location (describe, and attach a location map): <b>799 East Lake B'lv'd, Mahopac, NY 10541</b>			
Brief Description of Proposed Action:  <b>Addition to existing porch one story above grade.</b>			
Name of Applicant or Sponsor: <b>Elisabeth Sabatini &amp; Vincent Scarfone</b>		Telephone: <b>917-208-5479</b>	
		E-Mail:	
Address: <b>204 1st Ave. Apt. 3H</b>			
City/PO: <b>New York</b>		State: <b>NY</b>	Zip Code: <b>10009</b>
1. Does the proposed action only involve the legislative adoption of a plan, local law, ordinance, administrative rule, or regulation? If Yes, attach a narrative description of the intent of the proposed action and the environmental resources that may be affected in the municipality and proceed to Part 2. If no, continue to question 2.			NO  X  YES
2. Does the proposed action require a permit, approval or funding from any other governmental Agency? If Yes, list agency(s) name and permit or approval: <b>Carmel Zoning Board &amp; Building Dept.</b>			NO  YES  X
3.a. Total acreage of the site of the proposed action?		<u>0.203</u> acres	
b. Total acreage to be physically disturbed?		<u>0.009</u> acres	
c. Total acreage (project site and any contiguous properties) owned or controlled by the applicant or project sponsor?		<u>0.203</u> acres	
4. Check all land uses that occur on, adjoining and near the proposed action.			
<input type="checkbox"/> Urban <input type="checkbox"/> Rural (non-agriculture) <input type="checkbox"/> Industrial <input type="checkbox"/> Commercial <input checked="" type="checkbox"/> Residential (suburban) <input type="checkbox"/> Forest <input type="checkbox"/> Agriculture <input type="checkbox"/> Aquatic <input type="checkbox"/> Other (specify): _____ <input type="checkbox"/> Parkland			



18. Does the proposed action include construction or other activities that result in the impoundment of water or other liquids (e.g. retention pond, waste lagoon, dam)? If Yes, explain purpose and size: _____ _____	NO	YES
	X	
19. Has the site of the proposed action or an adjoining property been the location of an active or closed solid waste management facility? If Yes, describe: _____ _____	NO	YES
	X	
20. Has the site of the proposed action or an adjoining property been the subject of remediation (ongoing or completed) for hazardous waste? If Yes, describe: _____ _____	NO	YES
	X	
<b>I AFFIRM THAT THE INFORMATION PROVIDED ABOVE IS TRUE AND ACCURATE TO THE BEST OF MY KNOWLEDGE</b>		
Applicant/sponsor name: <u>Sabatini &amp; Scarfone</u> Date: <u>8/7/18</u>		
Signature:  <u>Project Architect</u>		

**Part 2 - Impact Assessment. The Lead Agency is responsible for the completion of Part 2.** Answer all of the following questions in Part 2 using the information contained in Part 1 and other materials submitted by the project sponsor or otherwise available to the reviewer. When answering the questions the reviewer should be guided by the concept "Have my responses been reasonable considering the scale and context of the proposed action?"

	No, or small impact may occur	Moderate to large impact may occur
1. Will the proposed action create a material conflict with an adopted land use plan or zoning regulations?		
2. Will the proposed action result in a change in the use or intensity of use of land?		
3. Will the proposed action impair the character or quality of the existing community?		
4. Will the proposed action have an impact on the environmental characteristics that caused the establishment of a Critical Environmental Area (CEA)?		
5. Will the proposed action result in an adverse change in the existing level of traffic or affect existing infrastructure for mass transit, biking or walkway?		
6. Will the proposed action cause an increase in the use of energy and it fails to incorporate reasonably available energy conservation or renewable energy opportunities?		
7. Will the proposed action impact existing: a. public / private water supplies? b. public / private wastewater treatment utilities?		
8. Will the proposed action impair the character or quality of important historic, archaeological, architectural or aesthetic resources?		
9. Will the proposed action result in an adverse change to natural resources (e.g., wetlands, waterbodies, groundwater, air quality, flora and fauna)?		

	No, or small impact may occur	Moderate to large impact may occur
10. Will the proposed action result in an increase in the potential for erosion, flooding or drainage problems?		
11. Will the proposed action create a hazard to environmental resources or human health?		

**Part 3 - Determination of significance. The Lead Agency is responsible for the completion of Part 3.** For every question in Part 2 that was answered "moderate to large impact may occur", or if there is a need to explain why a particular element of the proposed action may or will not result in a significant adverse environmental impact, please complete Part 3. Part 3 should, in sufficient detail, identify the impact, including any measures or design elements that have been included by the project sponsor to avoid or reduce impacts. Part 3 should also explain how the lead agency determined that the impact may or will not be significant. Each potential impact should be assessed considering its setting, probability of occurring, duration, irreversibility, geographic scope and magnitude. Also consider the potential for short-term, long-term and cumulative impacts.

<input type="checkbox"/> Check this box if you have determined, based on the information and analysis above, and any supporting documentation, that the proposed action may result in one or more potentially large or significant adverse impacts and an environmental impact statement is required.	
<input type="checkbox"/> Check this box if you have determined, based on the information and analysis above, and any supporting documentation, that the proposed action will not result in any significant adverse environmental impacts.	
_____	_____
Name of Lead Agency	Date
_____	_____
Print or Type Name of Responsible Officer in Lead Agency	Title of Responsible Officer
_____	_____
Signature of Responsible Officer in Lead Agency	Signature of Preparer (if different from Responsible Officer)



**SURVEY OF PROPERTY**  
 PREPARED FOR  
**SCARFONE AND SABBATINI**  
 SITUATE IN THE  
**TOWN OF CARMEL**  
**PUTNAM COUNTY, NEW YORK**  
 SCALE 1 IN. = 20 FT. 1974

CERTIFIED TO: *The Title Guarantee Co., & Putnam Savings Bank*

I, RICHARD H. GORR, the surveyor who made this map, certify that the survey shown hereon was completed by me on June 12, 1974, that this map was completed by me on June 25, 1974, and that this survey has been prepared in accordance with the existing Code of Practice for Land Surveys adopted by The New York State Association of Professional Land Surveyors. BROUGHT TO DATE FEBRU, 1989.

RICHARD H. GORR  
*Richard H. Gorr*  
 P.L.S. N.Y.S. Lic. No. 21513

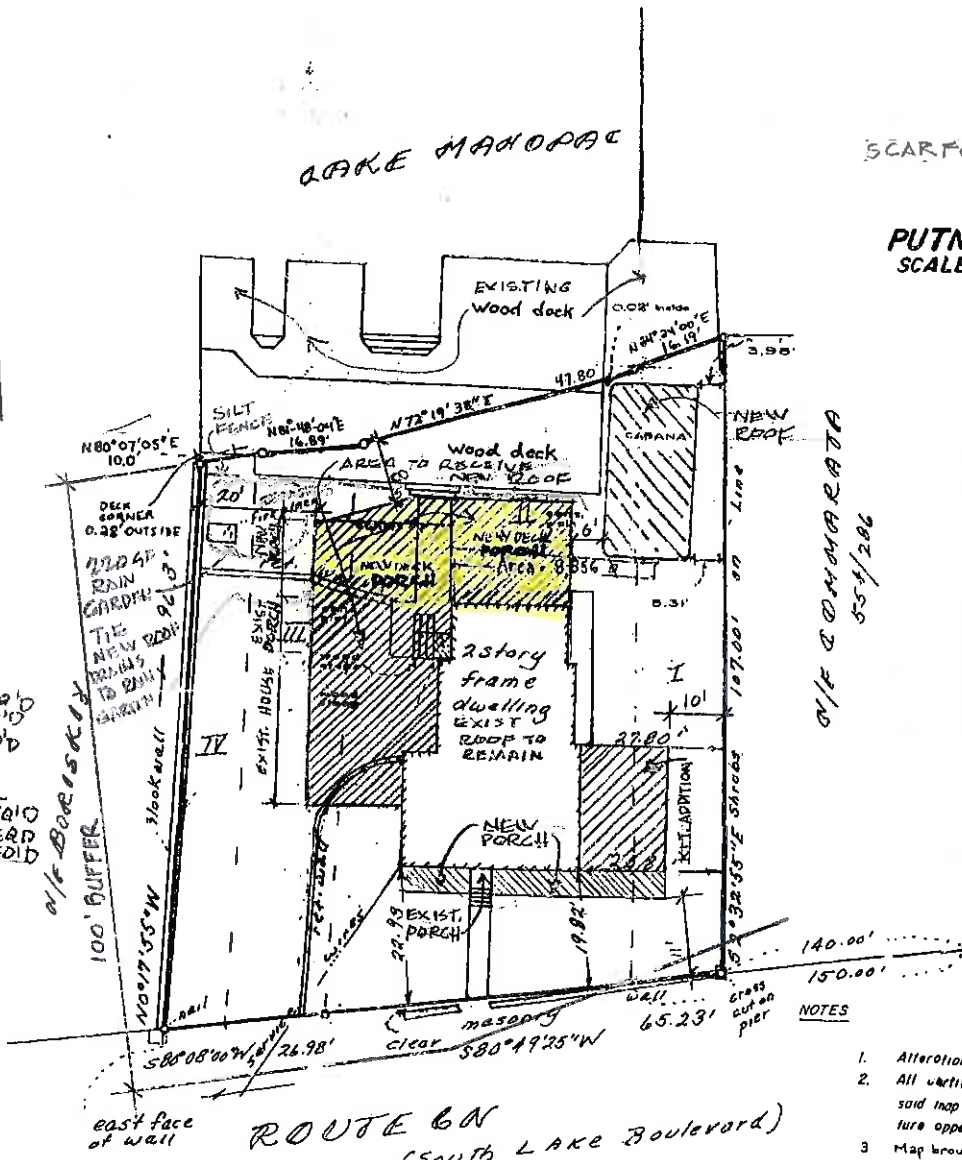
- NOTES
1. Alteration of this document, except by a licensed Land Surveyor, is illegal.
  2. All verifications are valid for this map and copies thereof only if the said map or copies bear the impressed seal of the surveyor whose signature appears hereon.
  3. Map brought to date, May 11, 1989.
  4. Map revised 6/30/89 to show rounded Cokona corners.

SITE PLAN  
 S-1 Rev 8/30/18

LAKE MADONNA

MAIN BLDG.  
 LOT AREA = 8,856 SF  
 FRONT YARD - 25 FT. REQ'D  
 SIDE YARD - 10 FT. REQ'D  
 REAR YARD - 15 FT. REQ'D

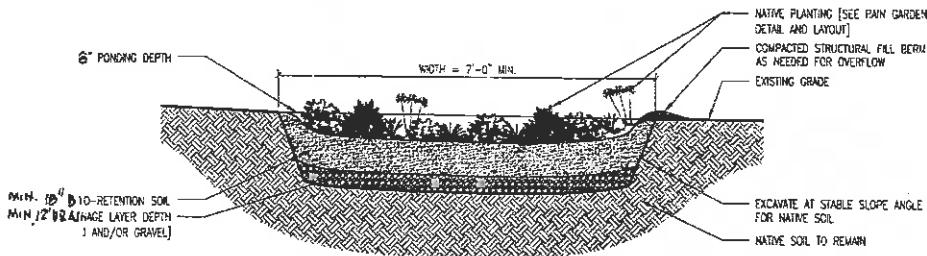
ACCESSORY BLDG.  
 FRONT YARD - 25 FT. REQ'D  
 SIDE YARD - 10 FT. REQ'D  
 REAR YARD - 10 FT. REQ'D



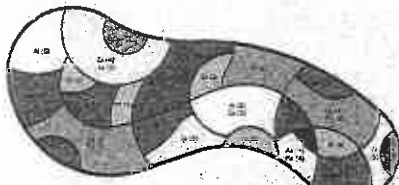
O/F COMPARATA  
 554/286

O/F THERESA B.  
 DIACONS

east face of wall  
**ROUTE 6N**  
 (South Lake Boulevard)

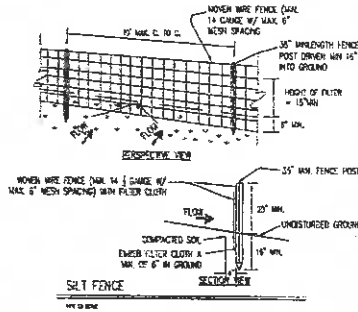


RAIN GARDEN PROFILE  
NOT TO SCALE



Symbol	Species Name	Common Name	No. of Plants
Aa	<i>Andropogon scoparius</i>	Red-top-pine	7
Al	<i>Asclepias tuberosa</i>	Butterfly-weed	12
Ca	<i>Composita americana</i>	Tall blackfoot	8
Ca2	<i>Cornus rugosa</i>	Blue holly	8
Ca3	<i>Cornus rugosa</i>	Flower holly	7
Ev	<i>Elymus virginicus</i>	Virginia wild rye	11
Ev2	<i>Elymus virginicus</i>	Purple-topped wild rye	3
Ev3	<i>Elymus virginicus</i>	Wild rye	6
Ev4	<i>Elymus virginicus</i>	Carolina blue	15
Ev5	<i>Elymus virginicus</i>	Virginia wild rye	11
Ev6	<i>Elymus virginicus</i>	Wild rye	12
Ev7	<i>Elymus virginicus</i>	Wild rye	15
Ev8	<i>Elymus virginicus</i>	Wild rye	9
Ev9	<i>Elymus virginicus</i>	Wild rye	14
		Total Plants Needed	143

RAIN GARDEN DETAIL AND LAYOUT  
NOT TO SCALE



CONSTRUCTION SPECIFICATIONS

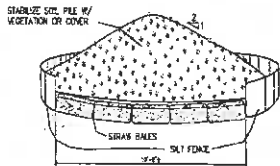
- WOVEN WIRE FENCE TO BE FASTENED SECURELY TO FENCE WITH WIRE TIES OR STAPLES. POSTS SHALL BE STEEL EITHER TYPED OR HANDWOOD.
- FILTER CLOTH TO BE FASTENED SECURELY TO WOVEN WIRE FENCE WITH TIES SPACED EVERY 18\"/>

SEQUENCE OF CONSTRUCTION

- INSTALL SILT FENCING AS SHOWN ON SITE PLAN. NOTIFY WETLAND INSPECTOR UPON INSTALLATION COMPLETION.
- CLEAR AREA WHERE CONSTRUCTION IS PROPOSED.
- CONSTRUCT RAIN GARDEN AND BERM.
- CONSTRUCT ADDITION AND DECK.
- INSTALL RAIN GARDEN PLANTINGS.
- CONNECT ROOF DRAINS TO RAIN GARDEN.
- CLEAN SITE OF ALL MATERIALS AND SEED LAWN AS NECESSARY.

NOTES

- WETLAND INSPECTOR TO BE NOTIFIED UPON COMPLETION OF RAIN GARDEN AND SILT FENCE INSTALLATION, IN ORDER TO PERFORM INSPECTION.
- THE MAINTENANCE OF THE STORMWATER FEATURES WILL CONFORM TO THE DEP SIGNED MAINTENANCE AGREEMENT.
- ALL EQUIPMENT FUELING IS TO BE DONE OFF SITE.



SOIL STOCKPILING DETAIL

NOT TO SCALE

- AREA CHOSEN FOR STOCKPILE OPERATIONS SHALL BE SAFE AND STABLE.
- MAXIMUM SLOPE OF STOCKPILE SHALL BE 1:2.
- UPON COMPLETION OF SOIL STOCKPILE, EACH PILE SHALL BE STABILIZED WITH EITHER SILT FENCE OR STRAW BALES, THEN COVERED WITH VEGETATION OR COVERED.

RAIN GARDEN CALCULATIONS

- DRAINAGE AREA: 1,033 SQFT
- DISTANCE TO GARDEN: LESS THAN 30 FT
- SOIL TYPE: PAXTON COMPLEX PnB
- GARDEN DEPTH: 6 IN.

CALCULATION:

$$P = 3.1 \text{ in [RAINFALL @ 90\%]}$$

$$RV = 0.05 + 0.009(100) = 0.95$$

$$A = 1,033 \text{ SQFT [AREA OF DRAINAGE]}$$

$$WQV = \text{WATER QUALITY VOLUME}$$

$$WQV = \frac{P(RV)(A)}{12} = \frac{(3.1)(.95)(1,033)}{12} = 253.52 \text{ FT}^3$$

$$ARG = 220 \text{ SQFT [RAIN GARDEN AREA]}$$

$$DSM = 1.5 \text{ FT [SOIL MEDIA DEPTH]}$$

$$PSM = 0.20 \text{ [SOIL MEDIA POROSITY]}$$

$$VSM = \text{SOIL MEDIA VOLUME}$$

$$VSM = (ARG)(DSM)(PSM) = (220 \text{ SQFT})(1.5 \text{ FT})(0.20) = 66.0 \text{ FT}^3$$

$$DDL = 1.0 \text{ FT [DRAINAGE LAYER DEPTH]}$$

$$PDL = 0.40 \text{ [DRAINAGE LAYER POROSITY]}$$

$$VDL = \text{DRAINAGE LAYER VOLUME}$$

$$VDL = (ARG)(DDL)(PDL) = (220 \text{ SQFT})(1.0 \text{ FT})(0.40) = 88.0 \text{ FT}^3$$

$$PD = 0.5 \text{ FT [PONDING DEPTH]}$$

$$WQV \leq VSM + VDL + (PD \times ARG) = 253.52 \text{ FT}^3 \leq 66.0 \text{ FT}^3 + 88.0 \text{ FT}^3 + (0.5 \text{ FT} \times 220 \text{ SQFT})$$

$$253.52 \text{ FT}^3 \leq 264.0 \text{ FT}^3$$

THEREFORE, THE RAIN GARDEN AREA OF 220.0 SQFT IS SUFFICIENT.  
ALL UNDERGROUND PIPING WILL BE 6\"/>

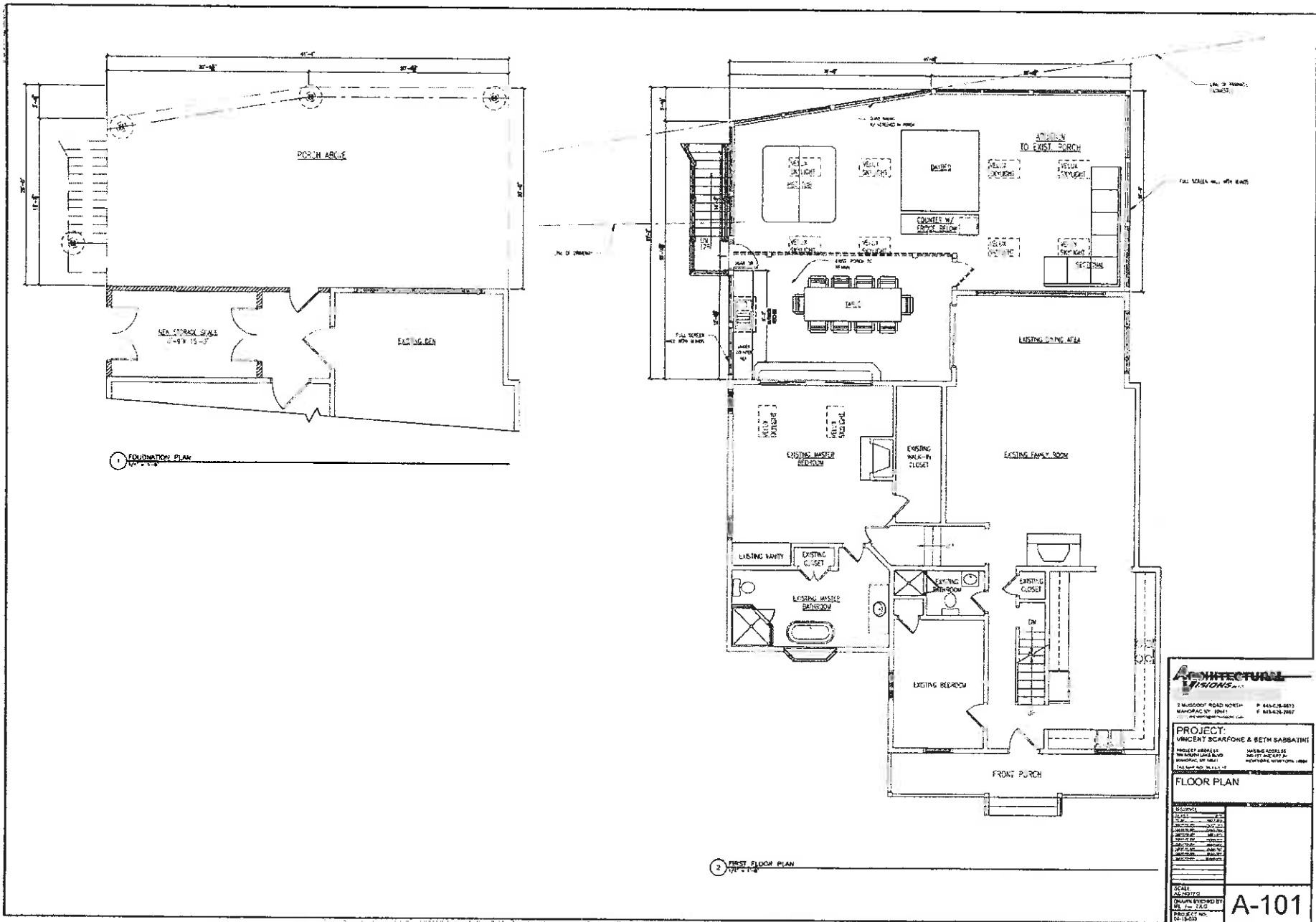
**ARCHITECTURAL VISIONS P.C.**  
A GREEN PEARL DESIGN GROUP

2 MUSCOOT ROAD NORTH P: 845-828-8813  
MAHOPAC NY, 10541 F: 845-628-2807  
JOEL.GREINBERG@ARCHVISIONS.COM

**PROJECT:**  
VINCENT SCARFONE & BETH SABBATINI

PROJECT ADDRESS MAILING ADDRESS  
799 SOUTH LAKE BLVD 240 1ST AVE APT 314  
MAHOPAC, NY 10541 NEW YORK, NEW YORK 10025  
TAX MAP NO. 7543-1-17

**SITE PLAN**  
DWG. 5-2 JOB# 04-15-143



1 FOUNDATION PLAN  
1/4" = 1'-0"

2 FIRST FLOOR PLAN  
1/8" = 1'-0"

**ARCHITECTURAL VISIONS**  
 3 MULLOOP ROAD NORTH  
 MANHASSET, NY 11041  
 P. 516-468-8473  
 F. 516-426-1947

**PROJECT:**  
 VINCENT SCARFONE & BETH SABBATINI  
 PROJECT ADDRESS: 720 BROADLANDING  
 MANHASSET, NY 11041  
 MAILING ADDRESS: 30511 104TH ST  
 NEW YORK, NEW YORK 10018  
 TEL: 516-468-8473

**FLOOR PLAN**

OWNER	
DATE	
SCALE	
DESIGNER	
ARCHITECT	
ENGINEER	
PLUMBER	
ELECTRICIAN	
MECHANICAL	
PAINTER	
ROOFER	
CONCRETE	
GLAZIER	
IRONWORKER	
SMITH	
WELDER	
PAVING	
LANDSCAPE	
SEWER	
WATER	
HEATING	
AIR CONDITIONING	
INSULATION	
EXTERIOR FINISHES	
INTERIOR FINISHES	
MECHANICAL	
ELECTRICAL	
PLUMBING	
PAINTING	
ROOFING	
CONCRETE	
GLAZING	
IRONWORK	
SMITHING	
WELDING	
PAVING	
LANDSCAPE	
SEWER	
WATER	
HEATING	
AIR CONDITIONING	
INSULATION	
EXTERIOR FINISHES	
INTERIOR FINISHES	
MECHANICAL	
ELECTRICAL	
PLUMBING	
PAINTING	
ROOFING	
CONCRETE	
GLAZING	
IRONWORK	
SMITHING	
WELDING	
PAVING	
LANDSCAPE	
SEWER	
WATER	
HEATING	
AIR CONDITIONING	
INSULATION	
EXTERIOR FINISHES	
INTERIOR FINISHES	
MECHANICAL	
ELECTRICAL	
PLUMBING	
PAINTING	
ROOFING	
CONCRETE	
GLAZING	
IRONWORK	
SMITHING	
WELDING	
PAVING	
LANDSCAPE	
SEWER	
WATER	
HEATING	
AIR CONDITIONING	
INSULATION	
EXTERIOR FINISHES	
INTERIOR FINISHES	
MECHANICAL	
ELECTRICAL	
PLUMBING	
PAINTING	
ROOFING	
CONCRETE	
GLAZING	
IRONWORK	
SMITHING	
WELDING	
PAVING	
LANDSCAPE	
SEWER	
WATER	
HEATING	
AIR CONDITIONING	
INSULATION	
EXTERIOR FINISHES	
INTERIOR FINISHES	
MECHANICAL	
ELECTRICAL	
PLUMBING	
PAINTING	
ROOFING	
CONCRETE	
GLAZING	
IRONWORK	
SMITHING	
WELDING	
PAVING	
LANDSCAPE	
SEWER	
WATER	
HEATING	
AIR CONDITIONING	
INSULATION	
EXTERIOR FINISHES	
INTERIOR FINISHES	
MECHANICAL	
ELECTRICAL	
PLUMBING	
PAINTING	
ROOFING	
CONCRETE	
GLAZING	
IRONWORK	
SMITHING	
WELDING	
PAVING	
LANDSCAPE	
SEWER	
WATER	
HEATING	
AIR CONDITIONING	
INSULATION	
EXTERIOR FINISHES	
INTERIOR FINISHES	
MECHANICAL	
ELECTRICAL	
PLUMBING	
PAINTING	
ROOFING	
CONCRETE	
GLAZING	
IRONWORK	
SMITHING	
WELDING	
PAVING	
LANDSCAPE	
SEWER	
WATER	
HEATING	
AIR CONDITIONING	
INSULATION	
EXTERIOR FINISHES	
INTERIOR FINISHES	
MECHANICAL	
ELECTRICAL	
PLUMBING	
PAINTING	
ROOFING	
CONCRETE	
GLAZING	
IRONWORK	
SMITHING	
WELDING	
PAVING	
LANDSCAPE	
SEWER	
WATER	
HEATING	
AIR CONDITIONING	
INSULATION	
EXTERIOR FINISHES	
INTERIOR FINISHES	
MECHANICAL	
ELECTRICAL	
PLUMBING	
PAINTING	
ROOFING	
CONCRETE	
GLAZING	
IRONWORK	
SMITHING	
WELDING	
PAVING	
LANDSCAPE	
SEWER	
WATER	
HEATING	
AIR CONDITIONING	
INSULATION	
EXTERIOR FINISHES	
INTERIOR FINISHES	
MECHANICAL	
ELECTRICAL	
PLUMBING	
PAINTING	
ROOFING	
CONCRETE	
GLAZING	
IRONWORK	
SMITHING	
WELDING	
PAVING	
LANDSCAPE	
SEWER	
WATER	
HEATING	
AIR CONDITIONING	
INSULATION	
EXTERIOR FINISHES	
INTERIOR FINISHES	
MECHANICAL	
ELECTRICAL	
PLUMBING	
PAINTING	
ROOFING	
CONCRETE	
GLAZING	
IRONWORK	
SMITHING	
WELDING	
PAVING	
LANDSCAPE	
SEWER	
WATER	
HEATING	
AIR CONDITIONING	
INSULATION	
EXTERIOR FINISHES	
INTERIOR FINISHES	
MECHANICAL	
ELECTRICAL	
PLUMBING	
PAINTING	
ROOFING	
CONCRETE	
GLAZING	
IRONWORK	
SMITHING	
WELDING	
PAVING	
LANDSCAPE	
SEWER	
WATER	
HEATING	
AIR CONDITIONING	
INSULATION	
EXTERIOR FINISHES	
INTERIOR FINISHES	
MECHANICAL	
ELECTRICAL	
PLUMBING	
PAINTING	
ROOFING	
CONCRETE	
GLAZING	
IRONWORK	
SMITHING	
WELDING	
PAVING	
LANDSCAPE	
SEWER	
WATER	
HEATING	
AIR CONDITIONING	
INSULATION	
EXTERIOR FINISHES	
INTERIOR FINISHES	
MECHANICAL	
ELECTRICAL	
PLUMBING	
PAINTING	
ROOFING	
CONCRETE	
GLAZING	
IRONWORK	
SMITHING	
WELDING	
PAVING	
LANDSCAPE	
SEWER	
WATER	
HEATING	
AIR CONDITIONING	
INSULATION	
EXTERIOR FINISHES	
INTERIOR FINISHES	
MECHANICAL	
ELECTRICAL	
PLUMBING	
PAINTING	
ROOFING	
CONCRETE	
GLAZING	
IRONWORK	
SMITHING	
WELDING	
PAVING	
LANDSCAPE	
SEWER	
WATER	
HEATING	
AIR CONDITIONING	
INSULATION	
EXTERIOR FINISHES	
INTERIOR FINISHES	
MECHANICAL	
ELECTRICAL	
PLUMBING	
PAINTING	
ROOFING	
CONCRETE	
GLAZING	
IRONWORK	
SMITHING	
WELDING	
PAVING	
LANDSCAPE	
SEWER	
WATER	
HEATING	
AIR CONDITIONING	
INSULATION	
EXTERIOR FINISHES	
INTERIOR FINISHES	
MECHANICAL	
ELECTRICAL	
PLUMBING	
PAINTING	
ROOFING	
CONCRETE	
GLAZING	
IRONWORK	
SMITHING	
WELDING	
PAVING	
LANDSCAPE	
SEWER	
WATER	
HEATING	
AIR CONDITIONING	
INSULATION	
EXTERIOR FINISHES	
INTERIOR FINISHES	
MECHANICAL	
ELECTRICAL	
PLUMBING	
PAINTING	
ROOFING	
CONCRETE	
GLAZING	
IRONWORK	
SMITHING	
WELDING	
PAVING	
LANDSCAPE	
SEWER	
WATER	
HEATING	
AIR CONDITIONING	
INSULATION	
EXTERIOR FINISHES	
INTERIOR FINISHES	
MECHANICAL	
ELECTRICAL	
PLUMBING	
PAINTING	
ROOFING	
CONCRETE	
GLAZING	
IRONWORK	
SMITHING	
WELDING	
PAVING	
LANDSCAPE	
SEWER	
WATER	
HEATING	
AIR CONDITIONING	
INSULATION	
EXTERIOR FINISHES	
INTERIOR FINISHES	
MECHANICAL	
ELECTRICAL	
PLUMBING	
PAINTING	
ROOFING	
CONCRETE	
GLAZING	
IRONWORK	
SMITHING	
WELDING	
PAVING	
LANDSCAPE	
SEWER	
WATER	
HEATING	
AIR CONDITIONING	
INSULATION	
EXTERIOR FINISHES	
INTERIOR FINISHES	
MECHANICAL	
ELECTRICAL	
PLUMBING	
PAINTING	
ROOFING	
CONCRETE	
GLAZING	
IRONWORK	
SMITHING	
WELDING	
PAVING	
LANDSCAPE	
SEWER	
WATER	
HEATING	
AIR CONDITIONING	
INSULATION	
EXTERIOR FINISHES	
INTERIOR FINISHES	
MECHANICAL	
ELECTRICAL	
PLUMBING	
PAINTING	
ROOFING	
CONCRETE	
GLAZING	
IRONWORK	
SMITHING	
WELDING	
PAVING	
LANDSCAPE	
SEWER	
WATER	
HEATING	
AIR CONDITIONING	
INSULATION	
EXTERIOR FINISHES	
INTERIOR FINISHES	
MECHANICAL	
ELECTRICAL	
PLUMBING	
PAINTING	
ROOFING	
CONCRETE	
GLAZING	
IRONWORK	
SMITHING	
WELDING	
PAVING	
LANDSCAPE	
SEWER	
WATER	
HEATING	
AIR CONDITIONING	
INSULATION	
EXTERIOR FINISHES	
INTERIOR FINISHES	
MECHANICAL	
ELECTRICAL	
PLUMBING	
PAINTING	
ROOFING	
CONCRETE	
GLAZING	
IRONWORK	
SMITHING	
WELDING	
PAVING	
LANDSCAPE	
SEWER	
WATER	
HEATING	
AIR CONDITIONING	
INSULATION	
EXTERIOR FINISHES	
INTERIOR FINISHES	
MECHANICAL	
ELECTRICAL	
PLUMBING	
PAINTING	
ROOFING	
CONCRETE	
GLAZING	
IRONWORK	
SMITHING	
WELDING	
PAVING	
LANDSCAPE	
SEWER	
WATER	
HEATING	
AIR CONDITIONING	
INSULATION	
EXTERIOR FINISHES	
INTERIOR FINISHES	
MECHANICAL	
ELECTRICAL	
PLUMBING	
PAINTING	
ROOFING	
CONCRETE	
GLAZING	
IRONWORK	
SMITHING	
WELDING	
PAVING	
LANDSCAPE	
SEWER	
WATER	
HEATING	
AIR CONDITIONING	
INSULATION	
EXTERIOR FINISHES	
INTERIOR FINISHES	
MECHANICAL	
ELECTRICAL	
PLUMBING	
PAINTING	
ROOFING	
CONCRETE	
GLAZING	
IRONWORK	
SMITHING	
WELDING	
PAVING	
LANDSCAPE	
SEWER	
WATER	
HEATING	
AIR CONDITIONING	
INSULATION	
EXTERIOR FINISHES	
INTERIOR FINISHES	
MECHANICAL	
ELECTRICAL	
PLUMBING	
PAINTING	
ROOFING	
CONCRETE	
GLAZING	
IRONWORK	
SMITHING	
WELDING	
PAVING	
LANDSCAPE	
SEWER	
WATER	
HEATING	
AIR CONDITIONING	
INSULATION	
EXTERIOR FINISHES	
INTERIOR FINISHES	
MECHANICAL	
ELECTRICAL	
PLUMBING	
PAINTING	
ROOFING	
CONCRETE	
GLAZING	
IRONWORK	
SMITHING	
WELDING	
PAVING	
LANDSCAPE	
SEWER	
WATER	
HEATING	
AIR CONDITIONING	
INSULATION	
EXTERIOR FINISHES	
INTERIOR FINISHES	
MECHANICAL	
ELECTRICAL	
PLUMBING	
PAINTING	
ROOFING	
CONCRETE	
GLAZING	
IRONWORK	
SMITHING	
WELDING	
PAVING	
LANDSCAPE	
SEWER	
WATER	
HEATING	
AIR CONDITIONING	
INSULATION	
EXTERIOR FINISHES	
INTERIOR FINISHES	
MECHANICAL	
ELECTRICAL	
PLUMBING	
PAINTING	
ROOFING	
CONCRETE	
GLAZING	
IRONWORK	
SMITHING	
WELDING	
PAVING	
LANDSCAPE	
SEWER	
WATER	
HEATING	
AIR CONDITIONING	
INSULATION	
EXTERIOR FINISHES	
INTERIOR FINISHES	
MECHANICAL	
ELECTRICAL	
PLUMBING	
PAINTING	
ROOFING	
CONCRETE	
GLAZING	
IRONWORK	
SMITHING	
WELDING	
PAVING	
LANDSCAPE	
SEWER	
WATER	
HEATING	
AIR CONDITIONING	
INSULATION	
EXTERIOR FINISHES	
INTERIOR FINISHES	
MECHANICAL	
ELECTRICAL	
PLUMBING	
PAINTING	
ROOFING	
CONCRETE	
GLAZING	
IRONWORK	
SMITHING	
WELDING	
PAVING	
LANDSCAPE	
SEWER	
WATER	
HEATING	
AIR CONDITIONING	
INSULATION	
EXTERIOR FINISHES	
INTERIOR FINISHES	
MECHANICAL	
ELECTRICAL	
PLUMBING	
PAINTING	
ROOFING	
CONCRETE	
GLAZING	
IRONWORK	
SMITHING	
WELDING	
PAVING	
LANDSCAPE	
SEWER	
WATER	
HEATING	
AIR CONDITIONING	
INSULATION	
EXTERIOR FINISHES	
INTERIOR FINISHES	
MECHANICAL	
ELECTRICAL	
PLUMBING	
PAINTING	
ROOFING	
CONCRETE	
GLAZING	
IRONWORK	
SMITHING	
WELDING	
PAVING	
LANDSCAPE	
SEWER	
WATER	
HEATING	
AIR CONDITIONING	
INSULATION	
EXTERIOR FINISHES	
INTERIOR FINISHES	