

Richard J. Franzetti, P.E.  
Town Engineer



(845) 628-1500  
(845) 628-2087  
Fax (845) 628-7085

**Office of the Town Engineer**  
60 McAlpin Avenue  
Mahopac, New York 10541

## **Carmel Sewer District #4**

### **Public Notice to Residents - Illegal sewer connections**

**September 2021**

Dear Resident,

Carmel Sewer District No. 4 (CSD 4), serving the Lake Secor area, is experiencing excessive flows in the sewer collection system. This excess water that flows into sanitary sewer pipes comes from groundwater and stormwater, which is called infiltration and inflow, or I/I. Stormwater (inflow) can rapidly flow into sewers via **illegal connections such as roof drain downspouts, foundation drains, storm drain cross-connections, and through holes in manhole covers**. Groundwater (infiltration) can seep into sewer pipes through holes, cracks, joint failures, and faulty connections

The sewer collection system piping and sewer pump stations are designed specifically for the collection and treatment of the community's sanitary sewage, **not stormwater or groundwater**. When excess flows from these illegal connections occur, they overload the system.

Once the system is overloaded, the wastewater has nowhere to go and backs up in the sewers, into sewer services and, if severe enough, into local homes and businesses potentially causing property damage.

Pump stations may also overflow, causing untreated wastewater to be discharged to surrounding properties and potentially contaminating water resources and imposing hazards to wildlife. The I&I may also result in compliance failure at the wastewater treatment. The New York State Department of Environmental Conservation will impose fines which are paid by the residents of the Lake Secor Sewer District for any illicit discharge or plant non-compliance.

Excess flow in the sewer system not only poses over-capacity issues, but it also increases unnecessary costs for transporting and treating wastewater. **It costs CSD 4 residents for every gallon of wastewater discharged**. By reducing the amount of "clean" water in the sanitary sewer system, it will reduce costs assessed to the CSD 4 and its users.

**Carmel District #4**  
**Public Notice to Residents - Illegal sewer connections**

**WHAT CAN YOU DO**

- Homeowners are responsible for maintaining their building sewers on their private property. You, as a homeowner, can reduce I&I from your property.
- Check that gutters and outside drains are not connected to the sewer system and disconnect any drains that are found to be connected.
- Avoid planting trees and shrubs over building sewers. The roots can damage the structure of the sewer pipe and cause leaks.
- Make sure that the caps are on your cleanouts. Lawn mowers tend to break the plastic caps. Replace the lids as necessary.
- **Ensure that basement drains are not connected to the sanitary sewer and install a sump pump to the stormwater drainage system, with permission from the Town of Carmel Highwater Department. instead.**
- Replace any known broken, leaky or problem sections of sewer pipe that are located on your property.

The Town is doing what it can to correct I/I sources in the sewer collection system in the street, as problems are found. However, the assistance and support of every resident in CSD 4 is necessary in order to eliminate these sources of extraneous flows into the sewer collection system from private properties, and keep District costs as cost-effective as possible.

If you need assistance with determining if you have stormwater or groundwater entering the sanitary system, please contact either the Town Engineering Department or our System Operator and we will schedule an appointment to inspect the premises.

**Town Engineering Department**  
Richard J. Franzetti, PE, Town Engineer  
(845) 628-2087

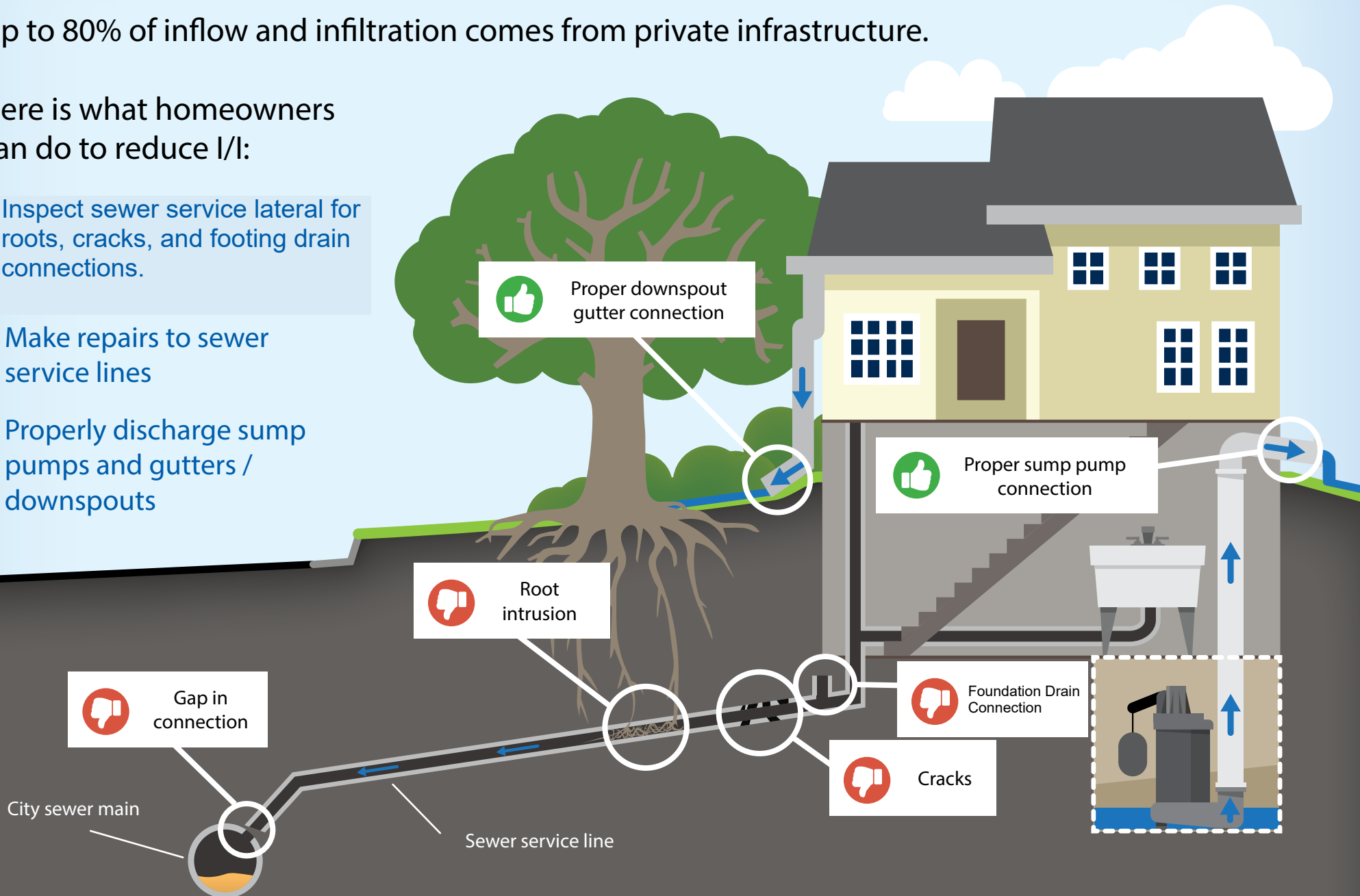
**Sewer System Operator**  
Inframark  
(845) 228-0460

# You can reduce inflow and infiltration

Up to 80% of inflow and infiltration comes from private infrastructure.

Here is what homeowners can do to reduce I/I:

- Inspect sewer service lateral for roots, cracks, and footing drain connections.
- Make repairs to sewer service lines
- Properly discharge sump pumps and gutters / downspouts



# Is your sump pump causing sewer backups?

Allowing clear water in the wastewater system costs you in many ways

- Causes sewer backups into homes
- Causes sewer overflows into rivers and lakes
- Increases sewer and utility fees
- Increases need for larger and more expensive sewer pipes and treatment facilities

Water from your sump pump should drain to the ground outside your home or to the stormwater system in your community.

## Fast Fact:

One incorrectly installed sump pump can add up to 7,200 gallons per day of clear water to the wastewater system. That is as much water as an average sized residential swimming pool!

